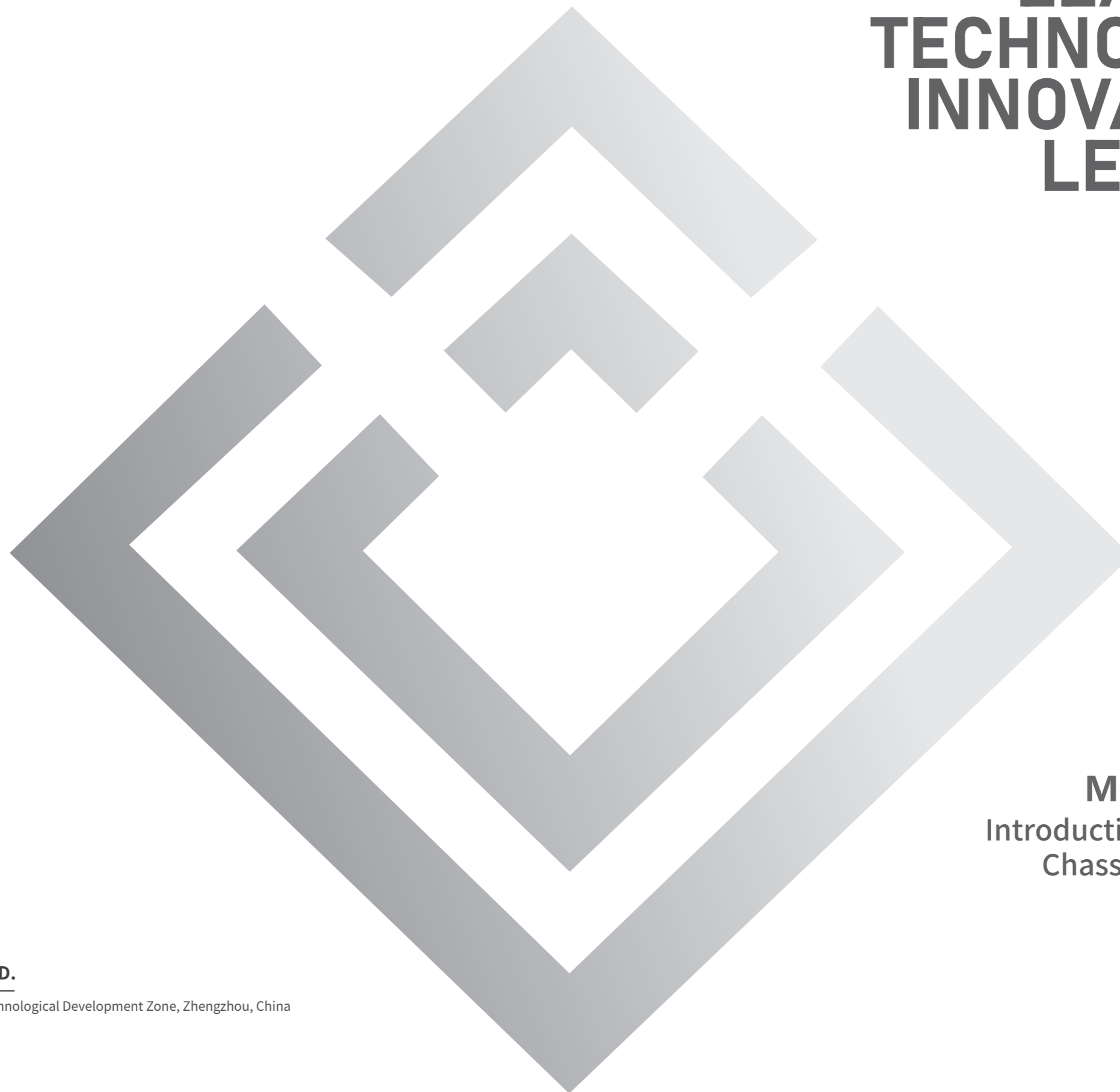




LEAN UP TECHNOLOGY
INNOVATION LEADER

LEAN UP
TECHNOLOGY
INNOVATION
LEADER



MOLEAD
Introduction to Jingyida
Chassis Division

ZHENGZHOU JINGYIDA AUTO PARTS CO., LTD.

Address: No. 69, No. Eighth Avenue, National Economic and Technological Development Zone, Zhengzhou, China
Postal code: 450016
Tel: 0371-85331888/85331886
Website: <https://en.molead.com>

CONTENTS

PART. 01

About Us

15 years of accumulation / outstanding strength

PART. 02

About Technology

R&D and manufacture/ exceptional capability

PART. 03

About Products

Dedicated quality / wide application

PART. 04

About Services

Professional and considerate/ high-quality and convenient



PART. About Us

15 years of accumulation / outstanding strength

01

Introduction to Chassis Division

Established in August 2008, the Chassis Division has a workforce of over 600 employees, including a professional technical team of over 100 members.

The products cover traditional axles, suspensions, e-axles and post-treatment systems, mainly supporting commercial vehicles such as buses, heavy trucks, light trucks, mining trucks, sanitation vehicles, RVs and trailers. We have a CNAS-certified test center with complete test verification capability, which meets the test requirements of national and industrial standards for axles, suspension assemblies, post-treatment systems and key parts.

With industry-leading production lines for axles, air suspensions, gears, and post-treatment products, we have an annual production capacity of **100,000** axles, **50,000** sets of suspensions, and **150,000** sets of post-treatment systems.

Up to now, there are more than **700,000** axles, **250,000** suspensions and **300,000** post-treatment systems in the market.

15 years of development,
solid foundation

>600 members,
professional team

700000 axles,
great market share

Development History

15-year history Solid foundation

2003

Predecessor:
Baite Auto Parts

2005

Renamed as
Suspension
Factory

2008

Chassis
Division
Established

2009

Muffler Unit
Established

2010

Assembly line
put into
production

2012

Machining,
welding and
independent
suspension
assembly line
put into
production

2014

China
Manufacturing
Informatization
Best Practice
Award

2015

Annual output
of 50,000 axles

2016

Reducer
housing and
differential
housing
automatic
production line
put into
production

2018

Layout of
sanitation
products

2019

Layout of
special vehicles
and RV
products

2020

Layout of
heavy trucks
and mining
truck
products

2020

Production line
of spiral bevel
gear automatic
put into
production

2023

Cylindrical gear
automatic
production line
put into
production



PART. About Technology

R&D and manufacture/ exceptional capability

02

Test verification capacity of the system

The Company has built an automobile chassis test center certified by CNAS, with national accreditation qualification and international mutual recognition qualification.

The test center can carry out full-platform parts and components level verification of axle, suspension and exhaust system. At the same time, it has both system level R&D verification capacity and industry-leading hardware strength such as servo hydraulic test equipment, driving axle test system, special fatigue test bench for driving axle assembly, road spectrum data acquisition equipment and NVH test equipment, engine emission test system, simulated combustion and vibration test bench.

The test center has an experienced verification team, which can realize various tests of axles, suspensions and exhaust systems. In addition to verifying the performance and durability of products according to national standards, industry standards and enterprise standards, it can also formulate personalized problem solutions according to different needs of customers.



Heavy investment in R&D Top-notch team

The Division attaches great importance to product technology R&D, and has an industry-leading R&D team. Our investment in research and development costs has been increasing year by year, and the number of patents is leading in the industry: As of 2022, the Division has 75 valid patents, including 22 invention patents.

In 2022, the R&D investment accounted for more than 7% of the annual operating revenue, ranking at a high level in the industry.



Simulation analysis of structural parts

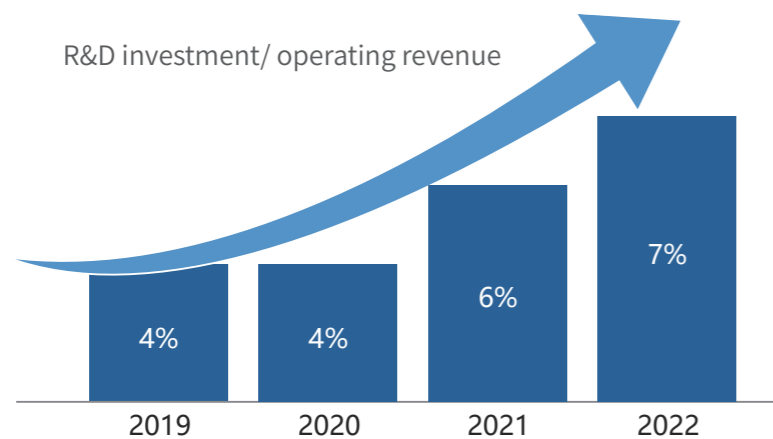
The Division has developed comprehensive simulation analysis capabilities including axle structural part simulation analysis, post-treatment structural part simulation analysis, drive axle transmission system simulation analysis, fluid simulation analysis and acoustic simulation analysis.



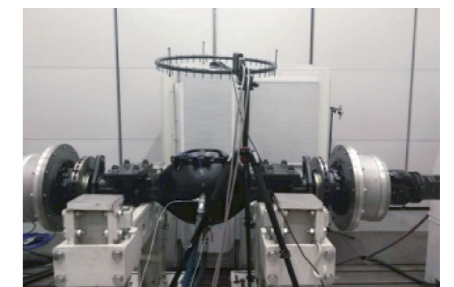
Gear R&D Manufacturing capacity

The Division has advanced gear and axle production workshops, with R&D and manufacturing capabilities of spiral bevel gears and cylindrical gears, as well as process manufacturing capabilities such as friction welding of finished axle heads, robotic automatic welding of axle housing welds, full-automatic processing of axle housings and axle assembly.

R&D investment/ operating revenue



■ Horiba driving axle test system



■ gfa sound source localization system



■ Engine bench and emission test system



■ Simulated combustion test bench

International Certification of Quality Management System

IATF16949 Quality Management System Certification: The company has a mature and complete new product development process (APQP) and implements quality control throughout the entire process of new product development using a quality gate management model. The quality of raw materials is strictly controlled from the source of production and manufacturing, and a quality management system for the whole product life cycle has been established. Since 2009, the company has consistently held the IATF16949 Quality Management System Certification issued by DQS AP Co., Ltd., signifying its alignment with international standards in terms of quality management.



■ Zeiss scanning electron microscope



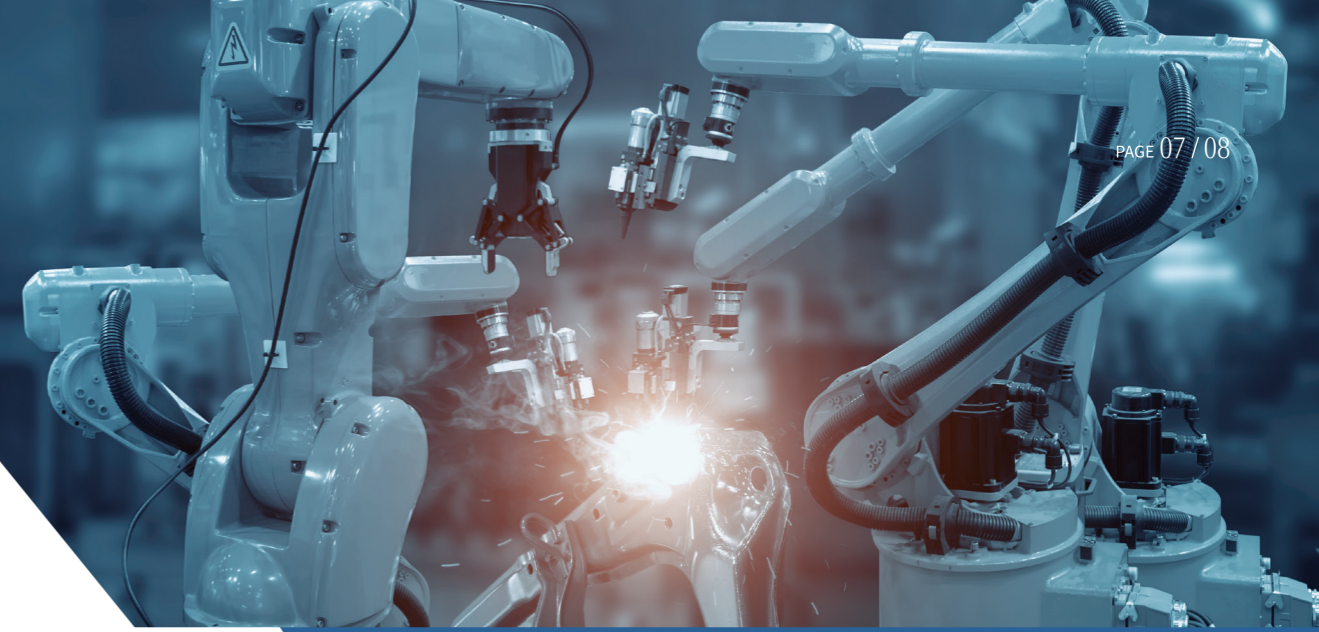
■ Three-coordinate measuring equipment



■ Gear measuring machine



■ Spectrometer



CNAS Certification of Laboratory Management System

CNAS (China National Accreditation Service for Conformity Assessment) Laboratory Certification: The Company has a laboratory certified by CNAS (China National Accreditation Service for Conformity Assessment), which can effectively carry out various physical and chemical analysis tests such as tensile test, metallographic analysis, fracture macro-micro analysis, microscopic scanning, hardness measurement (and gradient distribution display), composition detection, carbon and sulfur analysis, corrosion prevention test, wrench calibration, etc. The main equipment includes: Gear measuring machine, direct reading spectrometer, metallographic microscope, ultra-depth body microscope, carbon and sulfur analyzer, tensile testing machine, three-coordinate detector, hardness tester (Vickers, Brinell and Rockwell), continuous spray anti-corrosion testing machine, automatic intelligent torque wrench calibrator, scanning electron microscope, etc.



■ Gear tool grinder



■ Tensile testing machine



PART. About Products

Dedicated quality / wide application

03

CORE.01 / Front Axle Series

CORE.02 / Rear Axle Series

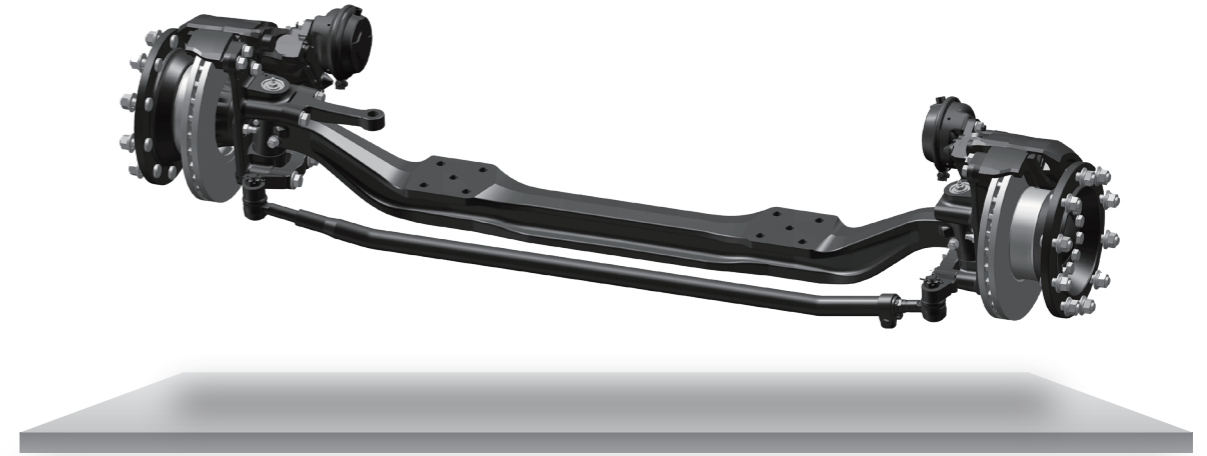
CORE.03 / Integrated Electric Driving Axle

CORE.04 / Front Suspension

CORE.05 / Rear Suspension

CORE.06 / Independent Suspension

CORE.01 Front Axle Series >



Product features



01 >
Wide platform coverage



02 >
Product lightweight



03 >
Long maintenance interval



04 >
Large corner



05 >
Small kingpin offset

Portfolio of front axle product

Model	Load (t)	Application scenario
AF22-AF35	2.2-3.5	5-8m school bus/front-end vehicle/bus, 6t/8t light truck and 8t sanitation vehicle
AF40-AF50	4.0-5.0	7m bus, 8-10m school bus/front-end vehicle/bus
AF55-AF60	5.5-6.0	10-11m road vehicle and bus
AF65-AF75	6.5-7.5	Low-floor bus above 10m, road vehicle/bus, dump truck and tractor truck above 11m
AF100	10.0	Airport shuttle bus
AF200/AF250	20.0/25.0	90t/105t mining truck

AF35 front axle

Load (kg)	3500
Rim mounting distance (mm)	2117(adjustable)
Maximum angle inside/outside (°)	50/37
Spring distance (mm)	846(adjustable)
Brake specification (")	Pneumatic disc type 17.5
Weight (kg)	175



Bearing unit at wheel end is optional, and hydraulic disc brake is optional

AF50 front axle

Load (kg)	5000
Rim mounting distance (mm)	2245 (adjustable)
Maximum angle inside/outside (°)	52/38
Spring distance (mm)	867 (adjustable)
Brake specification (")	Pneumatic disc type 19.5
Weight (kg)	310



Bearing unit at wheel end is optional

AF55 front axle

Load (kg)	5500
Rim mounting distance (mm)	2388
Maximum angle inside/outside (°)	55/40
Spring distance (mm)	890
Brake specification (")	Pneumatic disc type 22.5
Weight (kg)	430



Bearing unit at wheel end is optional

AF75 front axle

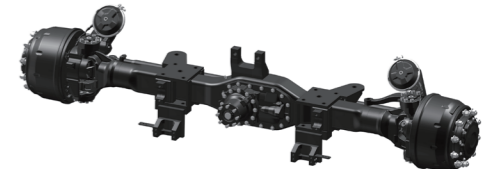
Load (kg)	7500
Rim mounting distance (mm)	2378(adjustable)
Maximum angle inside/outside (°)	52/40
Spring distance (mm)	880(adjustable)
Brake specification (")	Pneumatic disc type 22.5
Weight (kg)	451



Bearing unit at wheel end is optional, and optional pneumatic drum brake is optional

AF100 front axle

Load (kg)	10000
Rim mounting distance (mm)	2381/2387
Speed ratio	6.110
Maximum output torque (N·m)	30000
Spring distance (mm)	930/950
Brake specification	Pneumatic drum type φ410
Maximum angle inside/outside (°)	43/36
Weight (kg)	860/882



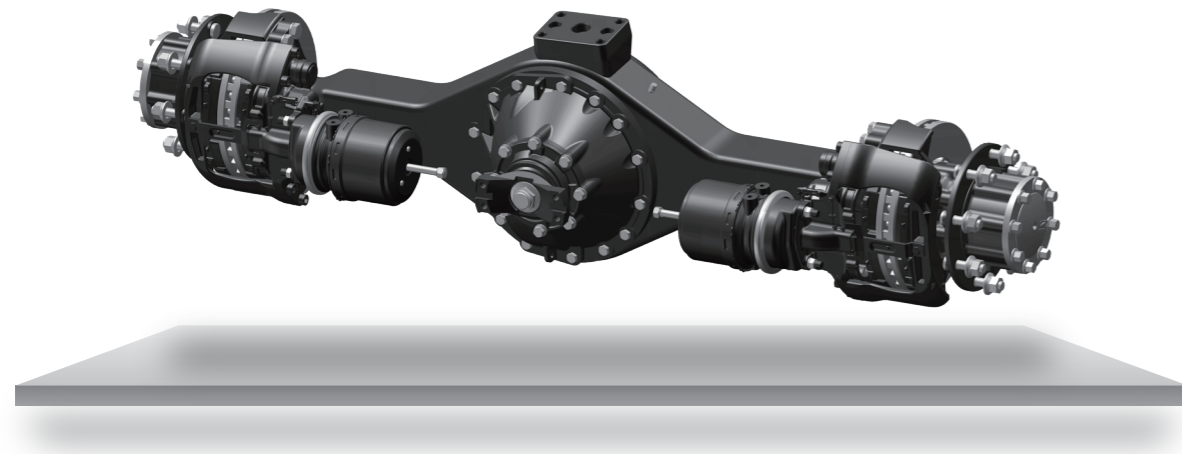
Pneumatic disc brake is optional

AF200 front axle







Load (kg)	20000
Rim mounting distance (mm)	3119/3209
Maximum angle inside/outside (°)	38/28
Spring distance (mm)	1450/1350
Brake specification (")	Pneumatic drum type φ500
Weight (kg)	1280



The wheel end is oil lubrication



Product features

- 
 01 > Wide platform coverage
- 
 02 > Product lightweight
- 
 03 > Low-noise main reduction
- 
 04 > Long maintenance interval
- 
 05 > High output torque
- 
 06 > Wide range of speed ratio options

Portfolio of rear axle product

Model	Load (t)	Application scenario
AR25-AR55	2.5-5.5	3t/4t sanitation vehicle, 5-6m school bus/front-mounted vehicle, 7m commercial vehicle and 8t sanitation vehicle
AR60-AR95	6.0-9.5	7-10m school bus/road bus/bus
AR115-AR130	11.5-13.0	Road vehicle/bus above 10m (including low-floor)
AM/AR100-110 intermediate and rear axle	10.0-11.0	Tractor, sanitation vehicle
AM/AR130-160 intermediate and rear axle	13.0-16.0	Tractor and dump truck
AR350/400	35.0/40.0	90t/105t mining truck

AR55 rear axle

Load (kg)	5500
Rim mounting distance (mm)	1518/1550
Speed ratio	3.69/4.36/4.89/5.88
Maximum output torque (N·m)	18000
Brake specification	Hydraulic disc-type two-cylinder Φ57
Wheel bolt distribution circle (mm)	Φ205/Φ222.5
Type of hub bearing	Maintenance-free
Weight (kg)	283

Oil-lubricated wheel hub is optional, and pneumatic drum brake is optional



AR90 rear axle

Load (kg)	9000
Rim mounting distance (mm)	1852
Speed ratio	3.73/3.91/4.10/4.36/4.89/5.13/5.63/6.14
Maximum output torque (N·m)	26500
Brake specification(")	Pneumatic disc type 19.5
Wheel bolt distribution circle (mm)	Φ275/Φ335
Type of hub bearing	Maintenance-free
Weight (kg)	507

Oil-lubricated wheel hub is optional, and pneumatic drum brake is optional



AR130 rear axle

Load (kg)	13000
Rim mounting distance (mm)	1832
Speed ratio	3.17/3.39/3.73/3.90/4.10/4.88/5.22/5.63/6.14
Maximum output torque (N·m)	43000
Brake specification(")	Pneumatic disc type 22.5
Wheel bolt distribution circle (mm)	Φ335
Type of hub bearing	Maintenance-free
Weight (kg)	660

Oil-lubricated wheel hub is optional, and pneumatic drum brake is optional



AM/AR100 intermediate and rear axle

Load (kg)	10000
Rim mounting distance (mm)	1832
Speed ratio	5.286
Maximum output torque (N·m)	45000
Brake specification	Pneumatic drum type Φ 410
Wheel bolt distribution circle (mm)	Φ335
Type of hub bearing	Oil lubrication
Weight (kg)	790



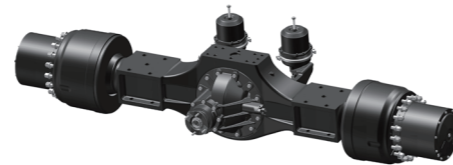
AM/AR160 intermediate and rear axle

Load (kg)	16000
Rim mounting distance (mm)	1832
Speed ratio	5.25/4.78/5.93/6.75
Maximum output torque (N·m)	50000
Brake specification	Pneumatic drum type Φ410
Wheel bolt distribution circle (mm)	Φ335
Type of hub bearing	Oil lubrication
Weight (kg)	920

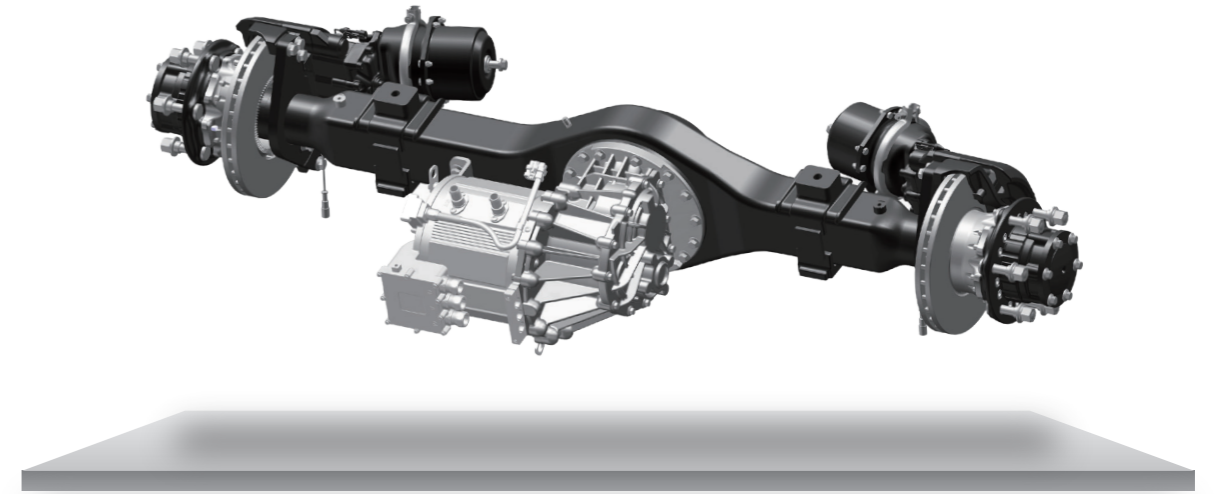


AR400 rear axle

Load (kg)	40000
Rim mounting distance (mm)	2594
Speed ratio	13.61/14.99/16.65/18.75/21.42/24.99
Maximum output torque (N·m)	169000
Brake specification	Pneumatic drum type φ500
Wheel bolt distribution circle (mm)	Φ425
Type of hub bearing	Oil lubrication
Weight (kg)	1847



CORE.03 Integrated Electric Driving Axle >



Product features



01 >
Product
lightweight



02 >
High system
integration



03 >
High transmission
efficiency



04 >
Low noise



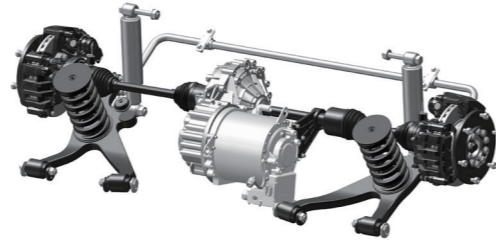
05 >
Advantages of motor,
reduction gear and axle
in the whole industry chain

Portfolio of integrated electric driving axle

Model	Load (t)	Application scenario
EA23	2.3	6m micro-circulation bus
EA25-EA30	2.5-3.0	Light bus and small truck
EA35-EA60	3.5-6.0	6-7m bus, light truck, sanitation vehicle and special-purpose vehicle
EA85	8.5	8m bus/road vehicle
EA95	9.5	10.5m bus, 11m road vehicle
EA100-EA130	10.0-13.0	49t/80t tractor, 38t/45t mixer and 32t sanitation vehicle

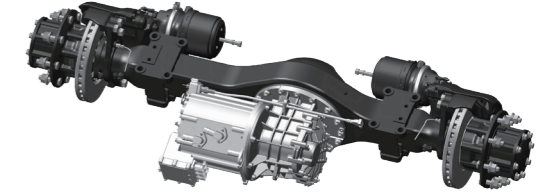
EA23 electric driving axle

Load (kg)	2300
Rim mounting distance (mm)	1962
Speed ratio	16.010
Maximum output torque (N·m)	4323
Type of hub bearing	Maintenance-free
Brake specification	Hydraulic disc-type two-cylinder φ48
Rated / Peak power (kW)	47/120
Rated/Peak torque (N·m)	130/270
Rated/Maximum speed (rpm)	3452/10000
Weight (kg)	289



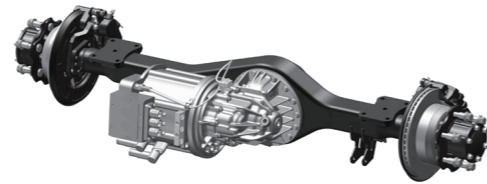
EA85 electric driving axle

Load (kg)	8500
Rim mounting distance (mm)	1838(adjustable)
Speed ratio	20.475
Maximum output torque (N·m)	9214
Type of hub bearing	Maintenance-free
Brake specification (")	Pneumatic disc type 19.5
Rated / Peak power (kW)	80/160
Rated/Peak torque (N·m)	200/450
Rated/Maximum speed (rpm)	3600/12000
Weight (kg)	525



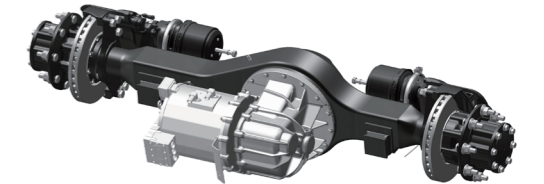
EA30 electric driving axle

Load (kg)	2500~3000
Rim mounting distance (mm)	1605 (adjustable)
Speed ratio	12.700
Maximum output torque (N·m)	4433
Type of hub bearing	Maintenance-free
Brake specification	Hydraulic disc-type two-cylinder φ43
Rated / Peak power (kW)	60/120
Rated/Peak torque (N·m)	160/350
Rated/Maximum speed (rpm)	3580/12000
Weight (kg)	212



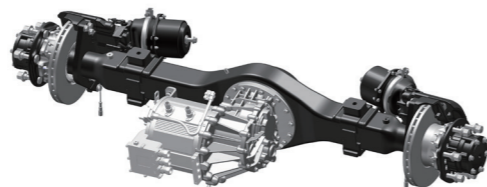
EA95 electric driving axle

Load (kg)	9500
Rim mounting distance (mm)	1916(adjustable)
Speed ratio	19.220
Maximum output torque (N·m)	12300
Type of hub bearing	Maintenance-free
Brake specification (")	Pneumatic disc type 19.5
Rated / Peak power (kW)	105/200
Rated/Peak torque (N·m)	335/640
Rated/Maximum speed (rpm)	3000/9000
Weight (kg)	598



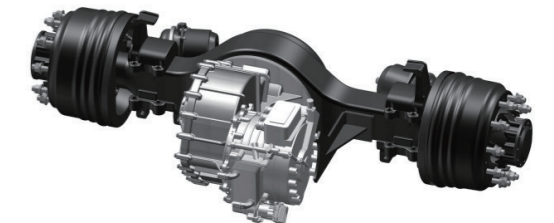
EA60 electric driving axle

Load (kg)	6000
Rim mounting distance (mm)	1760 (adjustable)
Speed ratio	16.279
Maximum output torque (N·m)	5779
Type of hub bearing	Maintenance-free
Brake specification (")	Pneumatic disc type 17.5
Rated / Peak power (kW)	80/160
Rated/Peak torque (N·m)	170/355
Rated/Maximum speed (rpm)	3600/12000
Weight (kg)	327

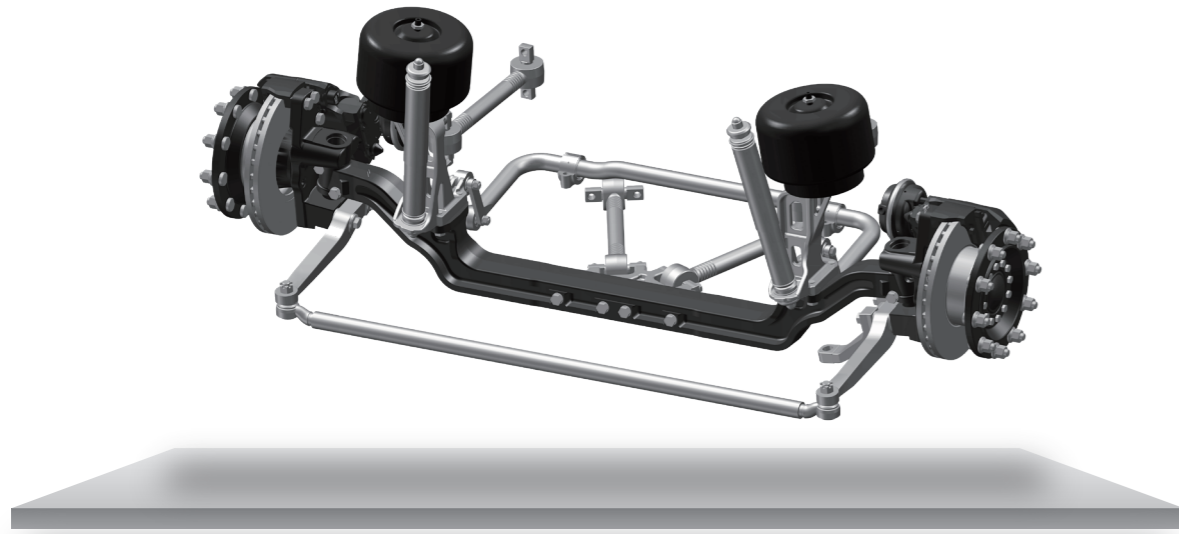


EA100 electric driving axle

Load (kg)	10000
Rim mounting distance (mm)	1832(adjustable)
Speed ratio	Gear 1: 56.48 Gear 2: 17.4
Maximum output torque (N·m)	41250
Type of hub bearing	Maintenance-free
Brake specification	Pneumatic disc type φ410
Rated / Peak power (kW)	150/250
Rated/Peak torque (N·m)	350/750
Rated/Maximum speed (rpm)	4093/12000
Weight (kg)	830



Note: The specific parameters vary depending on the configuration. For more parameter information, please contact Zhengzhou Jingyida Auto Parts Co., Ltd. Tel: 0371-85331888



Product features

- 

01 >
Wide platform coverage
- 

02 >
Product lightweight
- 

03 >
Low offset frequency
- 

04 >
Maintenance-free bushing
- 

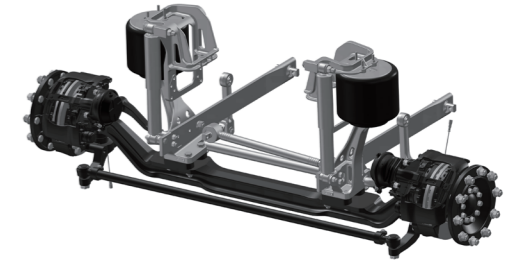
05 >
High comfort shock absorber

Portfolio of front suspension product

Model	Load (t)	Application scenario
SF35-SF45	3.5-4.5	7-10m road vehicle
SF55-SF70	5.5-7.0	9-12m road vehicle/bus
SF90	9.0	Airport shuttle bus

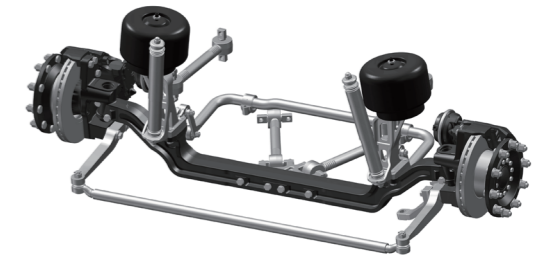
SF45 front suspension

Load bearing capacity (kg)	4500
Suspension stroke (mm)	81/88
Spring distance (mm)	890
Kingpin caster angle	5°
Weight (kg)	150
Structure type	Single trailing arm



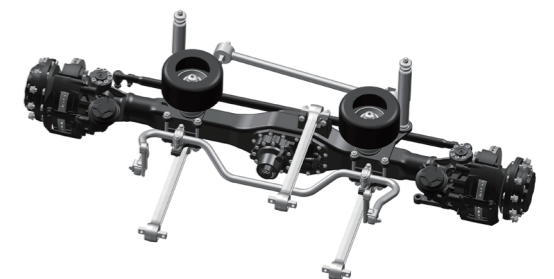
SF70 front suspension

Load bearing capacity (kg)	7000
Suspension stroke (mm)	75/90
Spring distance (mm)	1180
Kingpin caster angle	4°
Weight (kg)	136
Structure type	Four-link



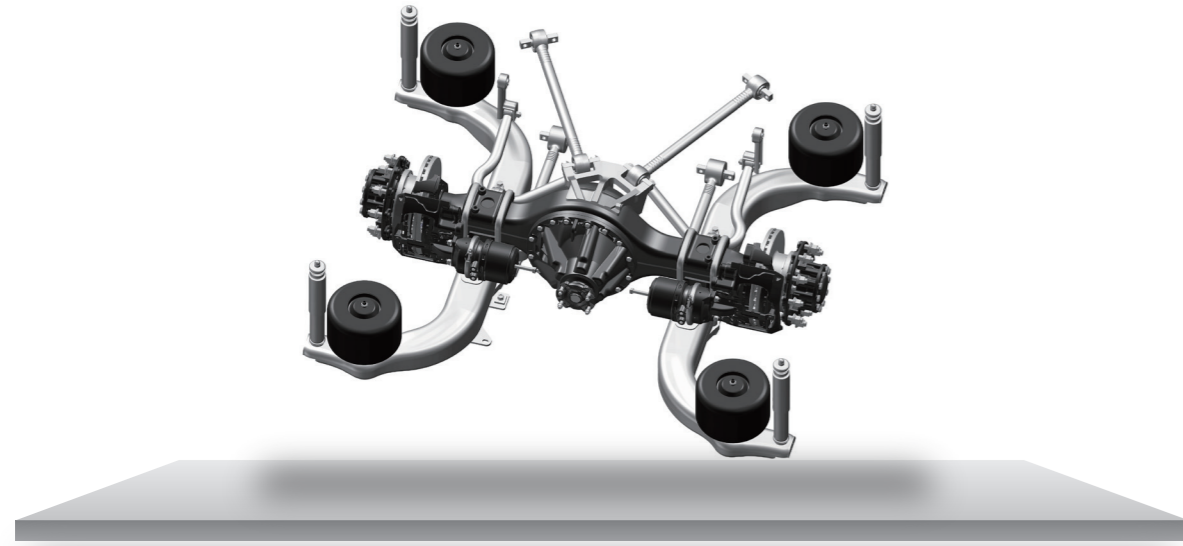
SF90 front suspension

Load bearing capacity (kg)	9000
Suspension stroke (mm)	73/110
Spring distance (mm)	1120
Kingpin caster angle	3°
Weight (kg)	114
Structure type	Four-link



Note: The specific parameters vary depending on the configuration. For more parameter information, please contact Zhengzhou Jingyida Auto Parts Co., Ltd. Tel: 0371-85331888

Rear Suspension Series >



Product features

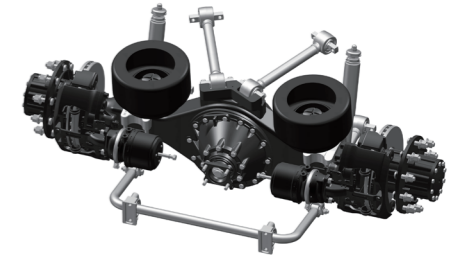
- 
01 >
 Wide platform coverage
- 
02 >
 Product lightweight
- 
03 >
 Low offset frequency
- 
04 >
 Large airbag span
- 
05 >
 High comfort shock absorber

Portfolio of rear suspension product

Model	Load (t)	Application scenario
SR65-SR75	6.5-7.5	7-9m road vehicle
SR95	8.5-9.5	8-10m road vehicle/bus
SR110-SR130	11.0-13.0	10-12m bus (including low-floor bus)/ road vehicle and airport shuttle bus
SR160	16.0	32t heavy truck

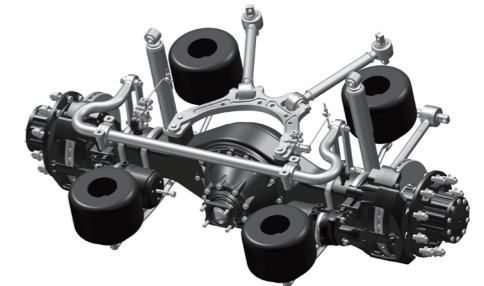
SR75 rear suspension

Load bearing capacity (kg)	7500
Suspension stroke (mm)	81/82
Spring distance (mm)	940
Airbag span	861
Weight (kg)	157
Structure type	Two-airbag and four-link



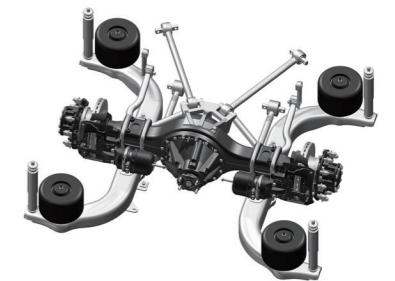
SR95 rear suspension

Load bearing capacity (kg)	9500
Suspension stroke (mm)	81/90
Spring distance (mm)	1030
Airbag span	861
Weight (kg)	196
Structure type	Four-airbag and four-link



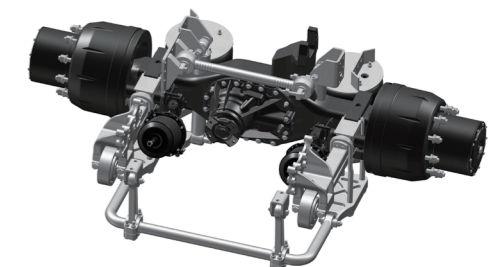
SR130 rear suspension

Load bearing capacity (kg)	13000
Suspension stroke (mm)	85/85
Spring distance (mm)	970
Airbag span	1660
Weight (kg)	357
Structure type	Four-airbag and four-link



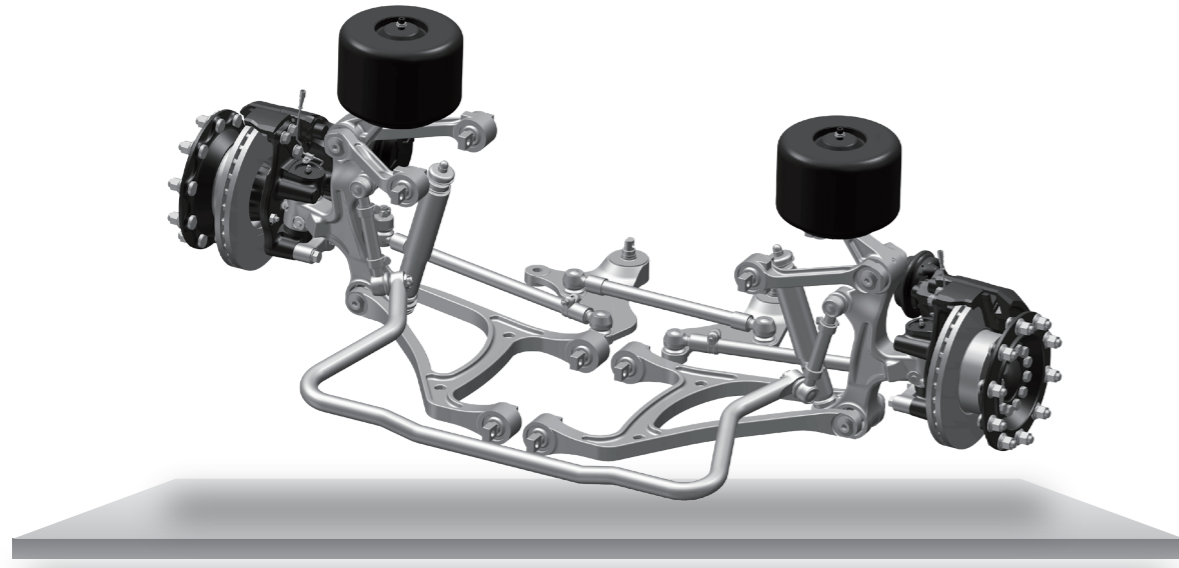
SR160 rear suspension

Load bearing capacity (kg)	16000
Suspension stroke (mm)	70/75
Spring distance (mm)	1040
Airbag span	780
Weight (kg)	265
Structure type	Single trailing arm with two airbags





Note: The specific parameters vary depending on the configuration. For more parameter information, please contact Zhengzhou Jingyida Auto Parts Co., Ltd. Tel: 0371-85331888

Independent Suspension Series >



Product features

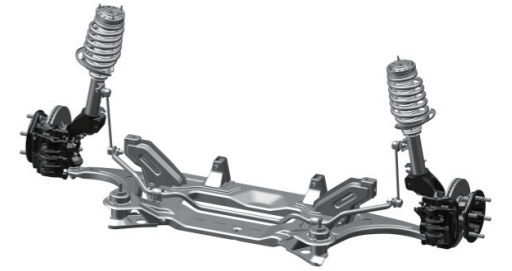
- 
01 >
 Wide platform coverage
- 
02 >
 Product lightweight
- 
03 >
 High comfort shock absorber
- 
04 >
 Maintenance-free bushing
- 
05 >
 Wide passage and large corner

Portfolio of independent suspension product

Model	Load (t)	Application scenario
SH15-SH23	1.5-2.3	Trailer RV
SI18	1.8	Light bus
SI21-SI27	2.1-2.7	5-7m commercial vehicle/RV
SI45-SI75	4.5-7.5	9-18m road vehicle/bus

SI18 independent suspension

Load bearing capacity (kg)	1800
Suspension stroke (mm)	66/122
Maximum angle inside/outside (°)	44/37
Weight (kg)	68
Brake specification	Hydraulic disc-type two-cylinder φ48
Wheel camber	-9'±30'
Kingpin inclination angle	12°25'
Kingpin caster angle	3°
Wheel rim	Maintenance-free
Structure type	McPherson



SH23 independent suspension

Load bearing capacity (kg)	2300
Suspension stroke (mm)	60/70
Weight (kg)	75
Brake specification	Hydraulic disc-type two-cylinder φ48
Wheel camber	0°±0°48'
Wheel rim	Grease lubrication
Structure type	Single trailing arm



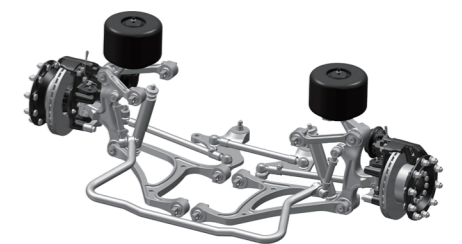
SI27 independent suspension

Load bearing capacity (kg)	2700
Suspension stroke (mm)	124/47
Maximum angle inside/outside (°)	42/38
Weight (kg)	117
Brake specification	Hydraulic disc two-cylinder φ56
Wheel camber	0°±0°45'
Kingpin inclination angle	13°
Kingpin caster angle	4°30'
Wheel rim	Maintenance-free
Structure type	Double wish-bone arm



SI75 independent suspension

Load bearing capacity (kg)	8500
Suspension stroke (mm)	79/85
Maximum angle inside/outside (°)	54/47
Weight (kg)	324
Brake specification	Pneumatic disc type 22.5"
Wheel camber	0°~0°30'
Kingpin inclination angle	8°30'
Kingpin caster angle	2°30'
Wheel rim	Maintenance-free
Structure type	Double wish-bone arm



Note: The specific parameters vary depending on the configuration. For more parameter information, please contact Zhengzhou Jingyida Auto Parts Co., Ltd. Tel: 0371-85331888

PART. About Services 04

Professional and considerate/
high-quality and convenient

Considerate service Strong support

Housekeeper-style fixed point service
Make the service more professional,
efficient and considerate



24 -hour
emergency
rescue service



400 hotline
24-hour manual
service hotline



600
Exclusive active
service team of
600 persons



2000
Over 2,000
special service
stations